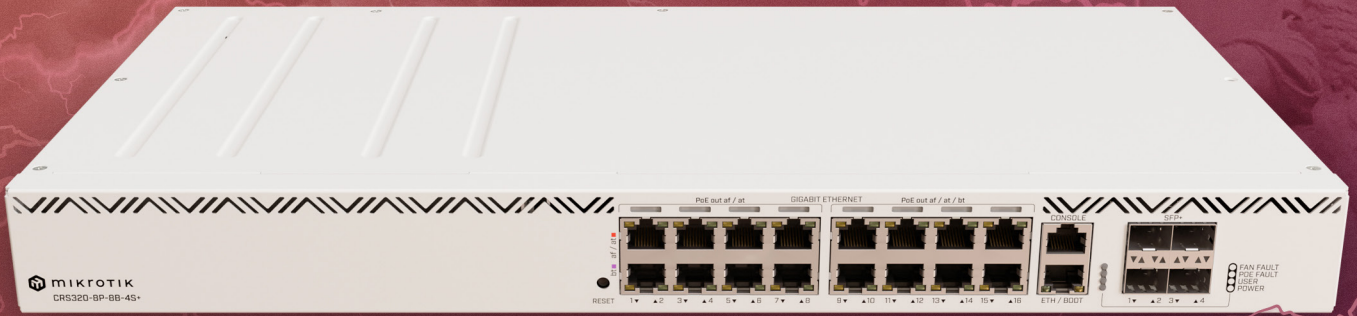




# CRS320-8P-8B-4S+RM

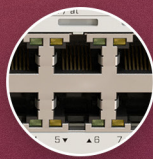
The first MikroTik high-power PoE++ (802.3bt) switch – for easy and cost-effective powering of 4K security cameras, ad panel screens, or even industrial automation systems.

Forget about countless power cables – create a cleaner space with PoE++!



Max power output:  
**1150 W!**

17 x



**1 GIGABIT  
ETHERNET PORTS**

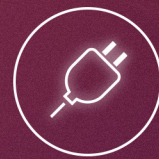
(SUPPORT 10M / 100M / 1G SPEEDS)

4 x



**10 GIGABIT  
SFP+ PORTS**

(SUPPORT 1G / 2.5G / 10G SPEEDS,  
depending on module)



Best price per  
PoE++ port!



PoE ++  
(802.3bt)



UP TO 90W  
PER PORT



PSU EXPANSION  
SLOT



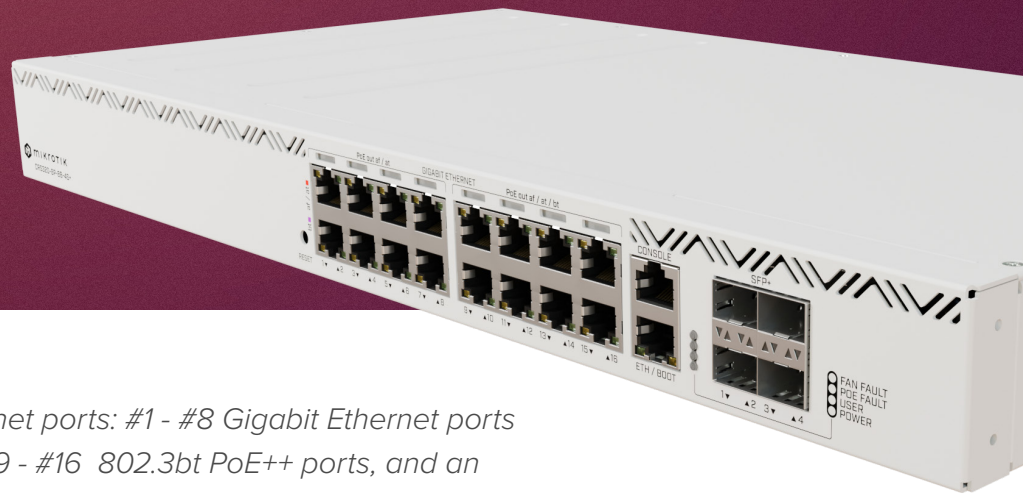
CONSOLE  
PORT

Cable management can get really exhausting. But it doesn't have to. Our first PoE++ or 802.3bt switch can make your cable management so much easier, as it can output enough power for all your hotel, conference hall, office and high-rise building needs!

4K security cameras with built-in winter heating elements, LED ad screens, PoE-powered light fixtures – CRS320 can **output up to 90W per port**, enough even for the most demanding devices! It comes with a reliable 600 W power supply, but we've reserved an expansion slot for an additional PSU, in case you need to raise the power output to 1150 W.



G1483-0600WNB, hot-swap 600 W power supply, available for purchase separately!



*There are 17 Gigabit Ethernet ports: #1 - #8 Gigabit Ethernet ports with 802.3af/at PoE-out, #9 - #16 802.3bt PoE++ ports, and an extra Gigabit Ethernet port for management purposes. There's also a console port, and four 10G SFP+ fiber ports for uplink.*

At its core, this convenient switch has a phenomenal Marvel switch-chip – the same one you've seen in ISP bestsellers like the netPower 16P and netFiber 9! It can handle the heaviest loads, including VLAN-filtering and hardware-offloaded Layer-3 routing.

If you've been looking for a way to simplify your cable management – this is it! With a single CRS320, you can ditch that endless mess of DC power adapters and start living the clean minimalist PoE dream.



Unlike our previous 802.3af/at Power Sourcing Equipment, **this is our first PoE switch with full implementation of the 802.3af/at/bt standard.** It supports only fully compliant 802.3 at/af/bt Powered Devices - mAP-lite / RB1100AHx4 / CRS510-8XS-2XQ / CRS504-4XQ / FTC11XG / CRS305-1G-4S+OUT. While it can also power "802.3af/at/bt-compatible" Powered Devices, **you must avoid specific grounding scenarios.** Please refer to the official [Help page](#).

## • Specifications

Product code	CRS320-8P-8B-4S+RM
CPU	Dual-Core 800 MHz
CPU architecture	ARM 32bit
Size of RAM	256 MB
RAM type	DDR3
Storage	32 MB, Flash
Number of 1G Ethernet ports	17 (Support 10M / 100M / 1G speeds)
Number of 10G SFP+ ports	4 (Support 1G / 2.5G / 10G speeds, depending on module)
Switch chip model	98DX226S
Operating system	RouterOS v7 only, License level 5
Dimensions	444 x 235 x 44 mm
Operating temperature	-10°C to +50°C

## • Powering

Number of AC inputs	1
Nominal current	10.35 A
Max current	11 A
AC input range	100-240 V
Frequency	50-60 Hz
PoE-out	802.3af/at/bt
Smart PoE	Controller
PoE-out ports	Ether1-Ether8 (af/at), Ether9-Ether16 (bt)
Max out per port output (input > 30 V)	560 (af/at) / 1667 (bt) mA
Max total out	17.82 A
Total output power	963 W
Total output current	17.82 A
Max power consumption (without attachments)	36 W
Max power consumption	600 W (1150 W with additional PSU)

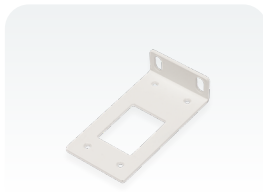
## • Included parts



Power cord



Fastening set



Rackmount ears